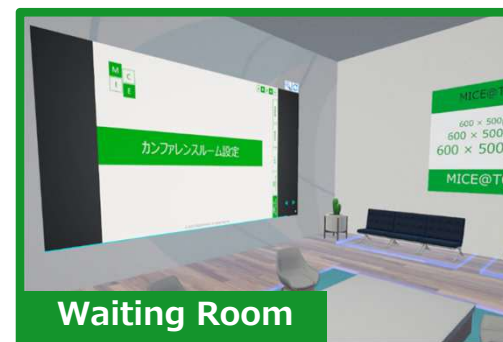
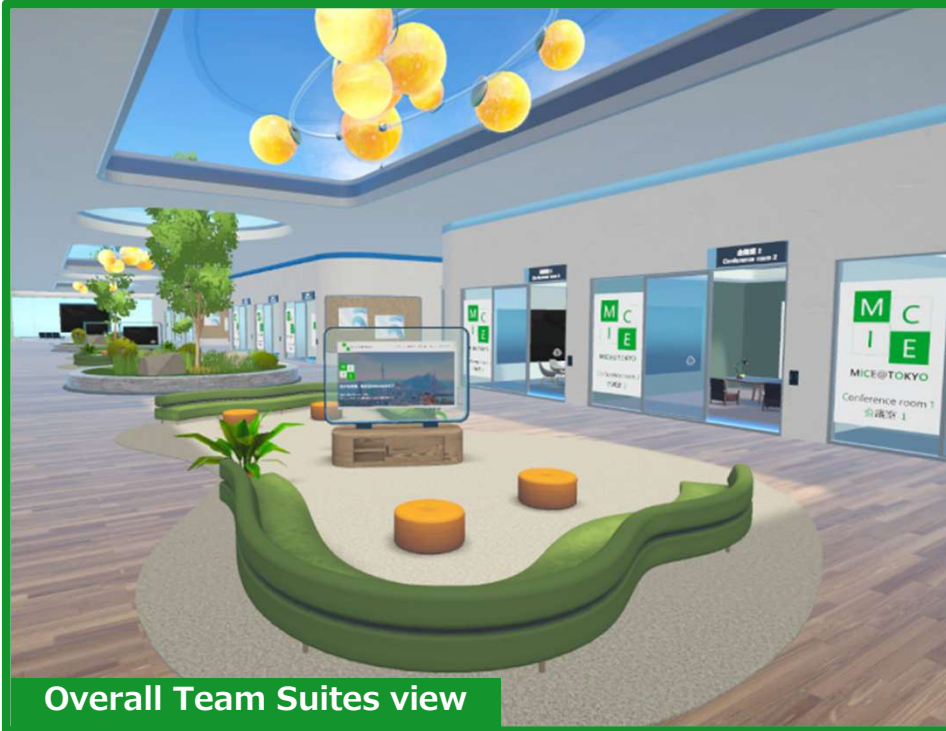


## Team Suites

Team Suites is a facility composed of meeting rooms and versatile spaces of different sizes, which are suitable for office use and interactive communication, e.g. business talks and opinion exchange meetings.



## Team Suites

Team Suites is a facility composed of meeting rooms and versatile spaces of different sizes, which are suitable for office use and interactive communication, e.g. business talks and opinion exchange meetings.

Facility	Name	Capacity	Equipment and functions, etc.
Team Suites M	Team Suites M 1	50	[Spaces in each Team Suites] ■ Office Space (x 18) ■ Conference Room (x 1) ■ Waiting Room (x 1) ■ Meeting Room (x 1) ■ End Cap (x 2) ■ Central Meeting Area (x 3)  [Key equipment] <Meeting Room> • Web Board: Projection screen for video/PDF/material (x 2) • Image Board: Put a logo/image on the particular wall/door • Private Volume (※) • Room layout change (2 types in total)  <Conference Room> • Web Board: Projection screen for video/PDF/material (x 5) • Image Board: Put a logo/image on the particular wall/door • Private Volume (※) • Room layout change (4 types in total)  (※) A function to limit voice communication to a specified scope
	Team Suites M 2	50	
	Team Suites M 3	50	
	Team Suites M 4	50	
	Team Suites M 5	50	
	Team Suites M 6	50	

## Team Suites

Team Suites is a facility composed of meeting rooms and versatile spaces of different sizes, which are suitable for office use and interactive communication, e.g. business talks and opinion exchange meetings.

Facility	Name	Capacity	Equipment and functions, etc.
Team Suites L	Team Suites L 1	200	
	Team Suites L 2	200	[Spaces in each Team Suites] ■ Office Space (x 36) ■ Conference Room (x 2) ■ Waiting Room (x 2) ■ Meeting Room (x 2) ■ End Cap (x 4) ■ Central Meeting Area (x 6) ■ Alcove (x 2)
	Team Suites L 3	200	
	Team Suites L 4	200	
	Team Suites L 5	200	[Key equipment] <Meeting Room> • Web Board: Projection screen for video/PDF/material (x 2) • Image Board: Put a logo/image on the particular wall/door • Private Volume (※) • Room layout change (2 types in total)
	Team Suites L 6	200	
	Team Suites L 7	200	<Conference Room> • Web Board: Projection screen for video/PDF/material (x 5) • Image Board: Put a logo/image on the particular wall/door • Private Volume (※) • Room layout change (4 types in total)
	Team Suites L 8	200	
	Team Suites L 9	200	(※) A function to limit voice communication to a specified scope

## Conference Hall

A highly-versatile space adapting to different layouts for different programs. Suitable applications include keynote lectures, conferences, business meetings, and workshops.



Facility	Name	Capacity	Equipment and functions, etc.
Conference Hall	Conference Hall 1	200	<ul style="list-style-type: none"> <li>• Web Board: Projection screen for video/PDF/material (x 3)</li> <li>• Image Board: Put a logo/image on the particular wall/door (x 3)</li> <li>• Sofa for speaker (x 4)</li> <li>• 4-seater sofa (x 4)</li> <li>• Platform (may change to a DJ booth)</li> <li>• Stage effects: balloon shower</li> <li>• Private Volume</li> <li>• Stereophony switch (ON/OFF)                      ON: Voices of nearer speakers are rendered louder whereas voices of farther speakers are rendered weaker.                      OFF: Voices are rendered at an equal volume regardless of the speaker-listener distance.</li> <li>• Room layout change (4 types; see above images)</li> </ul>
	Conference Hall 2	200	
	Conference Hall 3	200	



## Auditorium

Auditorium is a large hall with the largest capacity of MICE@TOKYO facilities, suitable for symposiums, international conferences, and festive events with a stage effect of balloon shower.



Facility	Name	Capacity	Equipment and functions, etc.
Auditorium	Auditorium 1	1,000	<ul style="list-style-type: none"> <li>• Web Board: Projection screen for video/PDF/material (x 3)</li> <li>• Image Board: Put a logo/image on the particular wall/door</li> <li>• Sofa for speaker (x 6)</li> <li>• Platform (may change to a DJ booth)</li> <li>• Room layout change (from minimum 190 seats to maximum 864 seats)</li> <li>• Stage effects: balloon shower</li> <li>• Lighting switch (ON/OFF)</li> <li>• Private Volume (by 4-5 seats)</li> <li>• Stereophony switch (ON/OFF)</li> <li>ON: Voices of nearer speakers are rendered louder whereas voices of farther speakers are rendered weaker.</li> <li>OFF: Voices are rendered at an equal volume regardless of the speaker-listener distance.</li> <li>• Forced seating</li> </ul>
	Auditorium 2	1,000	
	Auditorium 3	1,000	

## Expo Hall

In the Expo Hall, users may freely go back and forth among booths as an avatar and have individual business talks using the private volume function of each booth.



Facility	Name	Capacity	Equipment and functions, etc.
Expo Hall	Expo Hall 1	375	[Hall Facilities] <ul style="list-style-type: none"> <li>• Individual booths (Up to 150 booths can be set up.)</li> <li>• Reception</li> <li>• Lounge</li> </ul>
	Expo Hall 2	375	[Individual Booth Features] <ul style="list-style-type: none"> <li>• Web Board: Projection screen for video/PDF/material (x 3-5)</li> <li>• Image Board: Put a logo/image on the particular wall/door</li> <li>• Private Volume</li> </ul>

## Concert Hall

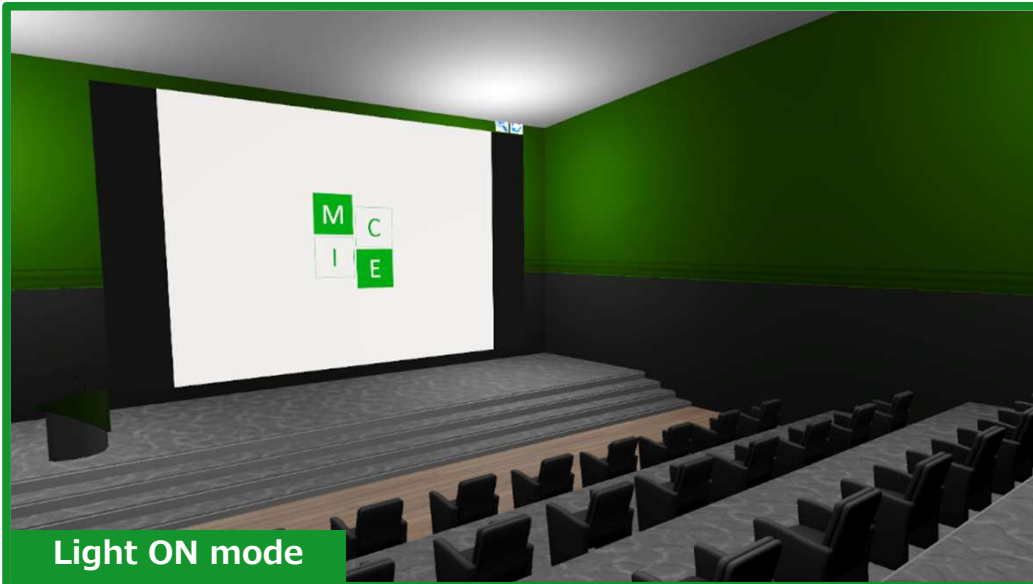
The Concert Hall is a hall facility suited for events for participants' interactions in a casual atmosphere, such as a dance party.



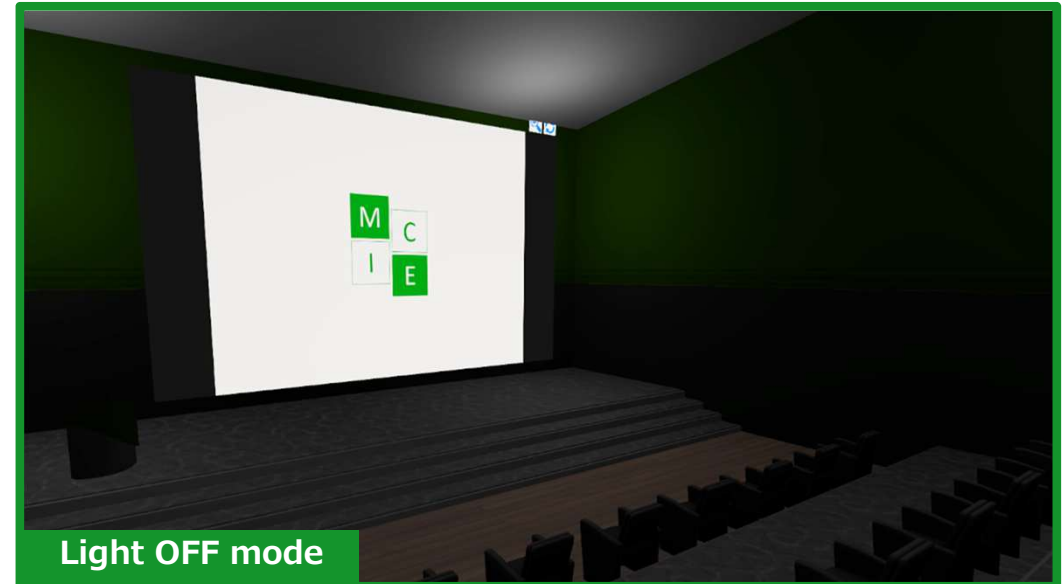
Facility	Name	Capacity	Equipment and functions, etc.
Concert Hall	Concert Hall	500	<ul style="list-style-type: none"> <li>• Web Board: Projection screen for video/PDF/material (x 3)</li> <li>• Image Board: Put a logo/image on the particular wall/door</li> <li>• Private Volume</li> <li>• Stage effects: balloon shower</li> <li>• Spotlight color setting</li> <li>• Interior color setting</li> <li>• Dance emotion features only available in this facility</li> <li>• Stereophony switch (ON/OFF)                      ON: Voices of nearer speakers are rendered louder whereas voices of farther speakers are rendered weaker.                      OFF: Voices are rendered at an equal volume regardless of the speaker-listener distance.</li> </ul>

## Cinema Room

The Cinema Room is a space designed for movie watching and the like with a large screen. Creative presentations are also one of the potential usages of this space.



Light ON mode



Light OFF mode

Facility	Name	Capacity	Equipment and functions, etc.
Cinema Room	Cinema Room	40	<ul style="list-style-type: none"> <li>• Web Board: Projection screen for video/PDF/material (x 1)</li> <li>• Platform (x 1)</li> <li>• Viewer seat (x 32)</li> <li>• Interior color setting</li> <li>• Lighting switch (ON/OFF)</li> <li>• Stereophony switch (ON/OFF)</li> </ul> <p>ON: Voices of nearer speakers are rendered louder whereas voices of farther speakers are rendered weaker.</p> <p>OFF: Voices are rendered at an equal volume regardless of the speaker-listener distance.</p>

**For more details of the facilities, please contact the MICE@TOKYO Secretariat.**